

single

created for your perfection

SERIES WK4 WATER-OPERATED TEMPERATURE CONTROL UNIT 90–160°C



WK4 SERIES UP TO 160°C

HIGHLIGHTS

ROBUST

- Magnetically coupled pump – from 160°C
- Stainless steel pressure vessel and pipelines reduce corrosion-related malfunctions, even when water quality fluctuates

COMPACT & POWERFUL

- Best cooling performance in its performance class, courtesy of the plate heat exchanger

ENERGY EFFICIENCY

- High energy-efficiency, low heat losses thanks to complete insulation of all heat-bearing components and an optional speed-controlled pump

PLENTY OF OPTIONS

- Flow measurement
- Tool emptying by suction/using compressed air
- Various interfaces
- 7" touch controller with additional functions ("Industry 4.0"-compatible)
- Pressure measurement
- Backflow protection
- Manual filling

...and much more



VERSATILE

- Many functions and options

UPGRADES

- Modular system allows for later upgrades

MADE IN GERMANY

- Developed and manufactured in Germany

CONTROL

- Our 3.5" and 7" controllers (see figure) offer the latest technology in operation and control
State of the art 7" touch controller SSC is compatible with Smart Line Industry 4.0 (optional).

RELIABLE

High levels of reliability and availability, thanks to smart, robust design using corrosion-free materials (water-bearing components made from stainless steel and non-ferrous metal). High protection class IP54 (hydraulic area and control box). Wear-free control of the heating via solid-state relays.



WK4 SERIES UP TO 160°C

The compact water temperature control systems for applications and requirements in the compact to medium performance range and temperatures up to 160°C are used particularly often in plastic injection moulding, but also in other processes. They are suitable for temperature control in high-quality applications and enable documentation of process parameters.

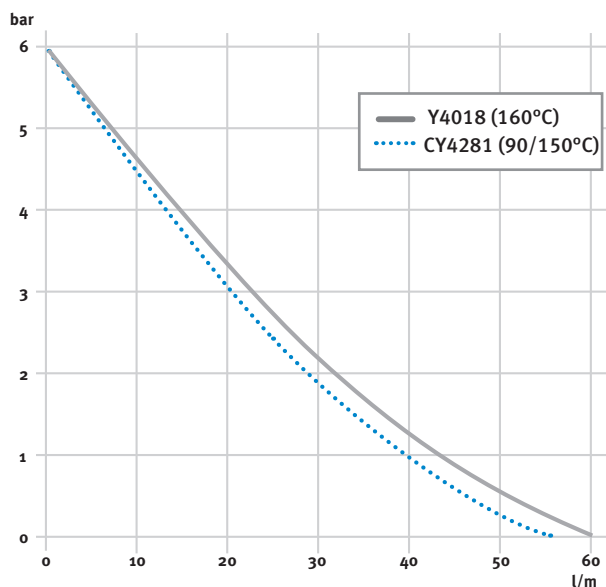
TECHNICAL SPECIFICATION

ASSEMBLY UNITS

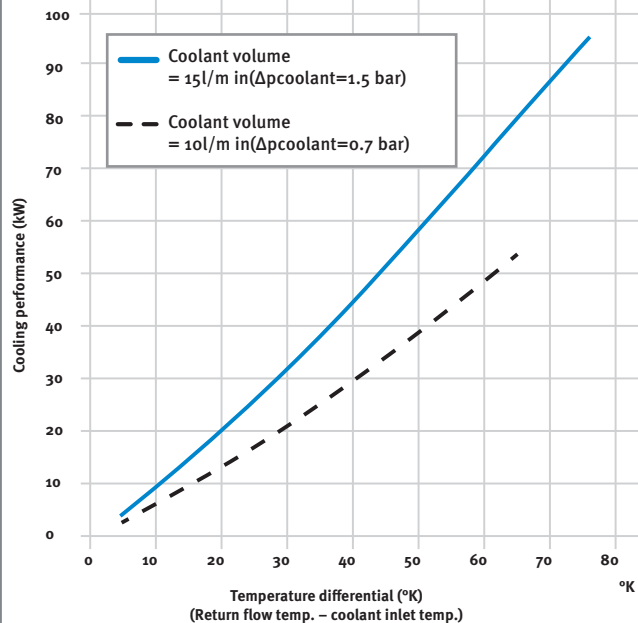
		WK-4-90	WK-4-150	WK-4 160
Max. temperature range	°C	90	150	160
Max. external volume	l	37	15	14
Heating capacity	kW	9/18	9/18	9/18
Type of cooling		indirect <i>(via heat exchanger)</i>	indirect <i>(via heat exchanger)</i>	indirect <i>(via heat exchanger)</i>
Cooling performance (80°C feed/15°C coolant)	kW	80	80	80
max. flow rate	l/min	60	60	57
max. flow pressure	bar	6	6	6
Pump motor capacity	kW	0,75	0,75	1
Connections – circulating medium	G	3/4"	3/4"	3/4"
Connections – coolant	G	1/2"	1/2"	1/2"
Dimensions	L mm	780	780	780
(without connections)	L* mm	835	835	835
	W mm	305	305	305
	H mm	705	705	705
Weight approx.	kg	72–90	72–90	72–90

*with Advanced package

Characteristic lines – pumps WK4

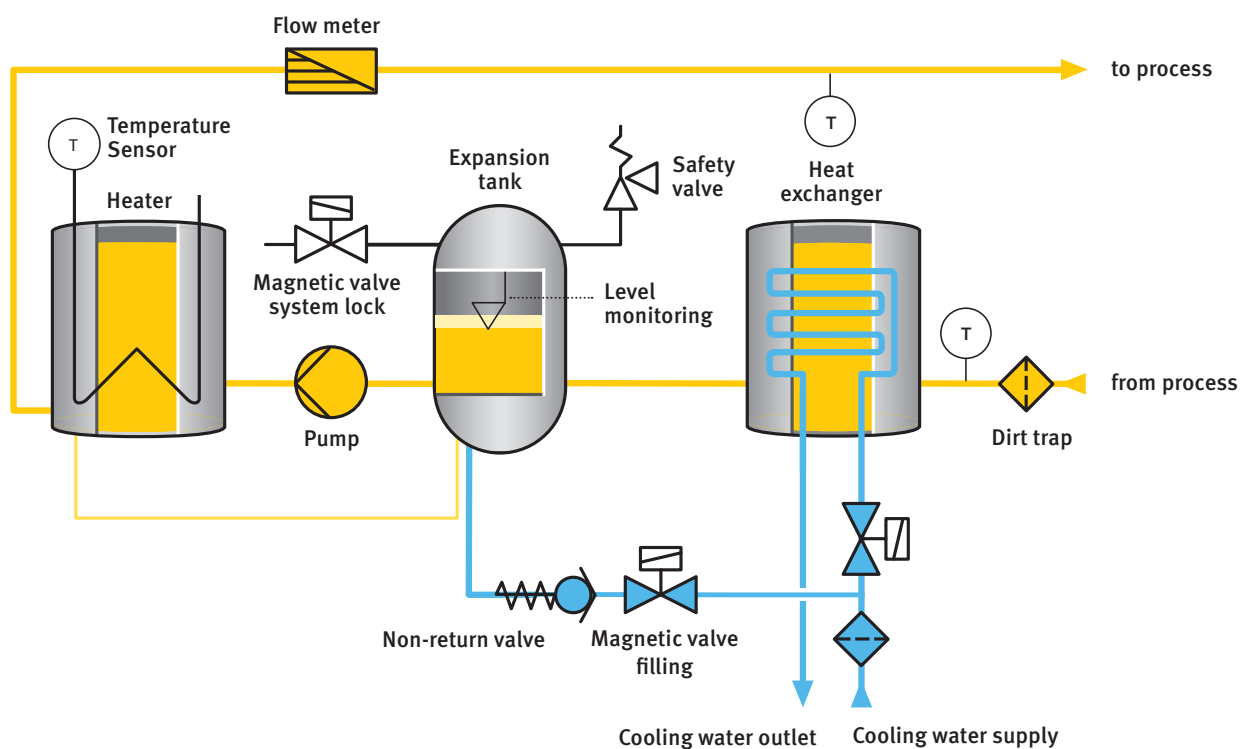


Cooling performance WK4...-80





PRODUCT LINE WK4 DIAGRAM



UNBEATABLE IN EVERY WAY: OUR FIELDS OF APPLICATION.

Our series of temperature control units are used wherever exact temperatures are of the essence. Here are a few examples:

WE FULFIL THE HIGHEST REQUIREMENTS

For our customers in the **pharmaceuticals industry**, we fulfil the strictest requirements even in clean rooms. We guarantee seamless documentation. And operation is gentle on pressure-sensitive devices at high temperatures.



WE ENSURE A LONG SERVICE LIFE

This is a benefit for the **chemical industry**. In this field, we work with maximum precision, for example by heating double-walled vessels. This improves the service life and availability of devices.



WE ENJOY HIGH PRECISION

We are strong in the production of **cereals** and **animal feed**. Also in the food industry. Our exact temperature control systems help our customers improve the shelf life, quality, taste and visual appeal of food items.



WE MOVE THINGS FORWARD

As **partner to the automotive industry**, we can ensure the optimal temperature of the underbody coating, for example. But we also control the operating temperatures of axle or motor test stands.



WE THINK BIG

We enable our customers to manufacture extremely large plastic parts with seamless top quality. This benefits makers of **white goods** as well as the **automotive industry**. We are also strong in **3K plastics production** with contour-aligned temperature control.



WE THINK AHEAD

Test facilities for **semiconductors** or temperature control units for **extruder systems**, for the product of **PET bottles** and **blanks....** For our systems, the sky is the limit. Talk to our experts! You will be amazed.



5 REASONS, TO CHOOSE SINGLE.

All of our work has one single goal – to help you, our customers, do your work a little bit better every time. In this, we support you all the way. – True to our motto: Single – created for your perfection.



EASY MAINTENANCE

The sophisticated design of our units makes them extremely easy to service and repair. This saves a lot of time and money in day-to-day business.



LOWER ENERGY CONSUMPTION

Our new temperature control units save between **40 and 70 per cent** of energy, depending on the application. They also need less cooling water and have a longer service life. This creates a win-win-win situation for our customers.



PREMIUM QUALITY

More than ever, manufacturers today need to produce flawless quality. We are a solid partner. Our temperature control units and their intelligent temperature controllers enable our customers to achieve impressive quality.



REALLY MADE IN EUROPE

We value the quality of European workmanship. For a simple reason: Because we develop our devices in Germany and manufacture our units completely in Europe, we can be 100 per cent certain that they work perfectly. And that is what our customers like.



GLOBAL PRESENCE

Quick, local support is often crucial in production. Our global sales and partner network is always there for you. A phone call is all it takes ... and we will be there to solve any problems and handle any challenges our customers might face.



YOU HAVE QUESTIONS? OR A TASK FOR US?

Then please contact us directly!

SINGLE GROUP GMBH

Ostring 17–19

73269 Hochdorf / Germany

Phone: +49 (0)7153/3009-0

Fax: +49 (0)7153/3009-50

www.single-temp.de